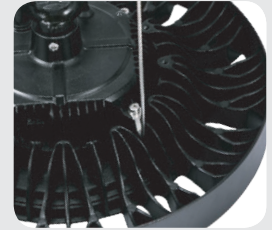
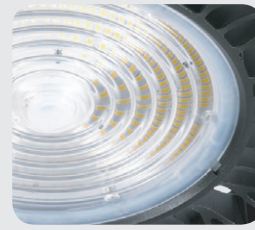


# LUMIÈRE LED POUR HAUTEUR LED HIGH BAY LIGHT

100W/150W/200W



Numéro de pièce Part No.	Pouvoir Power	Tension Voltage	Ecacy	Puce LED Chip LED	Lumen	CCT	CRI	PF	Angle de faisceau Beam Angle	IP
HG-HL07-100W	100W	AC120-347V	160lm/W±5%	3030/2835	16,000lm	4000K-6000K	>80	>0.95	60°/90°/120°	IP65
HG-HL07-150W	150W	AC120-347V	160lm/W±5%	3030/2835	24,000lm	4000K-6000K	>80	>0.95	60°/90°/120°	IP65
HG-HL07-200W	200W	AC120-347V	160lm/W±5%	3030/2835	32,000lm	4000K-6000K	>80	>0.95	60°/90°/120°	IP65

## CARACTÉRISTIQUES DU PRODUIT

Liste UL : convient aux endroits humides.

Marque de puce LED : Luminus.

Protection contre les surtensions : 10 KV.

Gradation : gradation 0-10 V, continue.

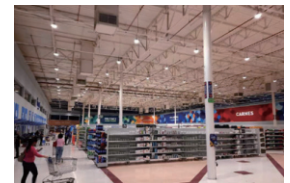
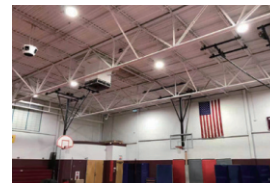
Boîtier : aluminium moulé sous pression ADC12.

Options : support en U, réflecteur AL, réflecteur PC.

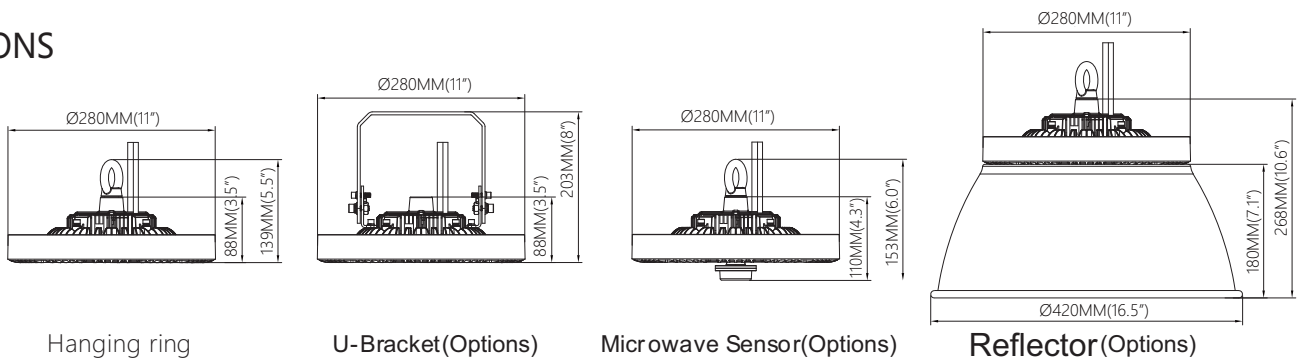
Intelligent en option : capteur à micro-ondes.

## PRODUCT FEATURES

- UL Listing: Suitable for wet locations.
- LED Chip Brand: Luminus.
- Surge Protection: 10KV.
- Dimming: 0-10V dimming, Continuous.
- Housing: ADC12 die-cast aluminum.
- Options: U-Bracket, AL Reflector, PC Reflector.
- Smart Optional: Microwave Sensor.



## DIMENSIONS



[www.lightingqueen.ca](http://www.lightingqueen.ca)

[info@lightingqueen.ca](mailto:info@lightingqueen.ca)

4028 Rue Steinberg Saint Laurent Qc H4R-2G7 514 338-1999